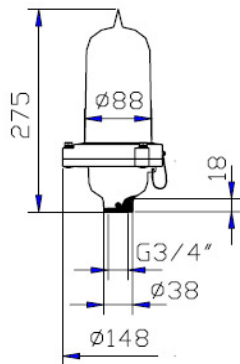




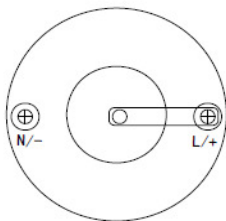
Patent No. 200920068564.3



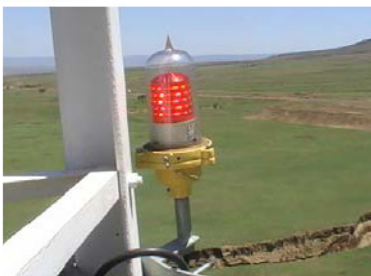
Installation dimension ( mm )



Connect diagram



Application



**Application**

ABC-7L Single Aviation Obstruction Light for marking towers(Telecom, GSM), Cranes, Hoists,Smokestacks, Buildings, Wind generator and any other potentially hazardous obstructions to air traffic.

**Main Functions & Features**

- Base is made of die casting aluminum alloy, with light weight and corrosion resistance.
- ABC-7A(LED) bulb uses super brightness LED, and its life time more than 100,000hrs.
- PC cover is used for ABC-7A(LED) bulb, providing good intensity, thermal stability and good finishing surface.
- The lamp housing and upper lamp holder are sealed with structural glue, to ensure the good watertight of the product.
- A bird spike is provided on the top to avoid the drop of the bird.
- Built-in photocell, can switch ON/OFF the light at dawn and night automatically.(optional)

**Specifications**

International standard	ICAO(Aerodromes Annex 14) Low intensity ; FAA-L810	Vertical degree	≥10°
Light source	LED	Horizontal degree	360°
Light color	Red, Amber, Green, Blue, White(Optional)	Work way	Steady burning or flash ( optional )
Operating voltage	AC110V~AC240V/DC12V/DC24V/DC40V~DC60V	Visible distance	> 3.5KM(AT=0.85)
Power consumption	5W	LED life	≥100,000hrs
Intensity	>10cd		
Ambient temperature	-30°C ~ +70°C	IP Protection	IP65
Humidity	10% ~ 95% (No coagulation )	Weight	1.25kg
Material	Base : Aluminum alloy Housing : PC		

**Installation and operation**

- Check whether the supply voltage does comply with the rated voltage of the lamp(Pay attention to the polarity in case of DC voltage)
- Insert the power cable through the bottom of lamp holder, and connect them to the terminals in the base respectively.
- Connect the earth wire to the corresponding earth terminals.
- Tighten the screws between lamp housing and base.
- Screw the lamp on the G3/4" (G1" ) threaded pipe, which should be fixed on a smooth surface with enough mechanical strength.
- Verify whether the power cables are well connected before power on.

**Models**

Model	Function & Characteristic	
	Characteristic	Remark
ABC-7L	Steady burning	
ABC-7LP	ABC-7L with photocell	Controlled illumination of light-operated switch : 70/100lux
ABC-7LQ	ABC-7L with photocell and flash type	Controlled illumination of light-operated switch : 70/100lux Flash frequency : 30~40times/min
ABC-7LS	Flash type	Flash frequency : 30~40times/min