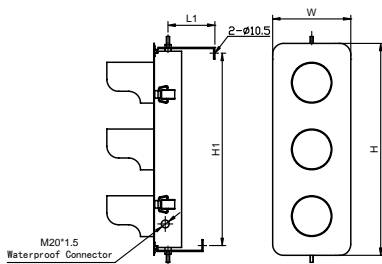
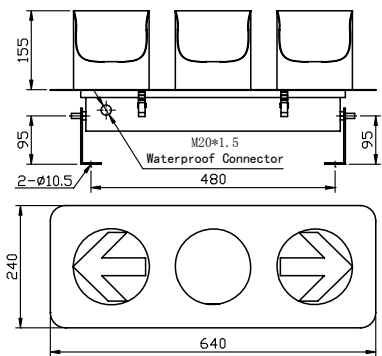




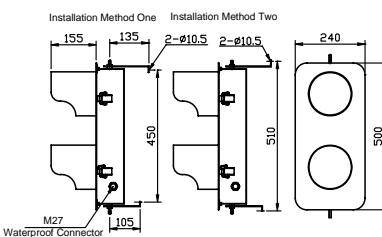
Mounting dimension (mm)



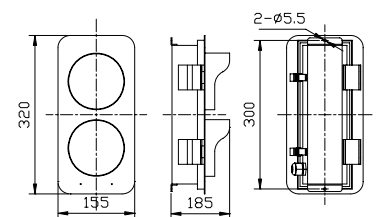
ABC-2/ABC-3



ABC-3H



ABC-3-2



ABC-2-2

Application:

Apecial designed for various travelling cranes and hoist, to check the power of an equipment or device when a problem occurs.

Major functions & features

- Employ cold rolled steel enclosure with powdercoat paint finishes, providing durability and corrosion resistant.
- Use super bright LEDs as bulb, providing external long life.
- Completely sealed by silicon rubber glue, providing high IP protection.
- Flexible mounting mode, Lamp no. and color can be customized based on the customer' s special requirement, for wide application.

Specifications

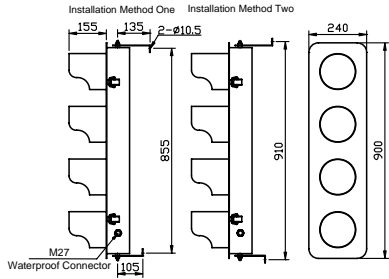
Supply voltage	AC220V/AC380V(Special voltage can be customized)	Frequency	50Hz~60Hz
Rating power	< 8W (each lamp) < 5W (each lamp) (ABC-2A,ABC-2F, ABC-2F1)	Lamp color	Red, amber, green, blue or white(optional)
Visible distance	> 300m	Life time	100,000h
Work way	Steady burning	Wiring	Y-connection
Ambient temperature	-30°C ~ +70°C	IP Protection	IP65
Relative humidity	10% ~ 95% (no coagulation)	Material	Cold rolled steel/stainless steel304 (optional)
Weight	See below model selection table		

Installation and operation

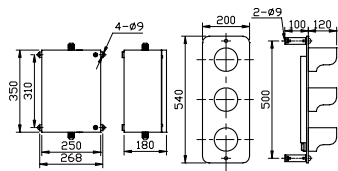
- Verify whether the supply voltage complies with the rated voltage of indicator.
- Secure the indicator panel on a smooth surface with enough mechanical strength using 2 Nos. M8 screws.
- Unfasten the fastener, open the panel, and terminals will appear.
- Plug power cables from water-proof gland box and connect them to corresponding terminals.
- Power on and power indicator will light up.

Notice

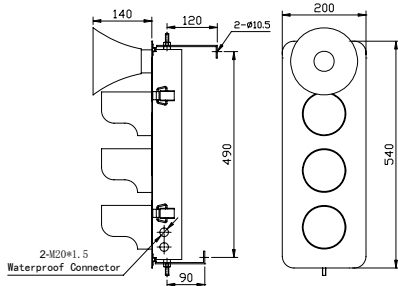
- Should make sure all power connect correct before function.
- The product will heating-up when working, it' s normal.
- Please don' t open any part of the lights when working to avoid any dangers.
- The product with sealed structure, please don' t dismantling except professional person, or we' ll don' t do the guarantee.
- Please use the product based on above instruction.



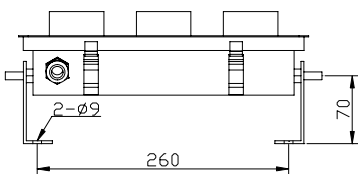
ABC-3-4



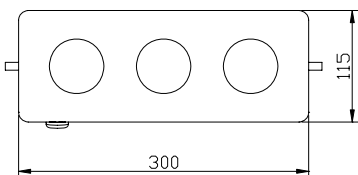
ABC-2-8



ABC-H2



ABC-2F without brim



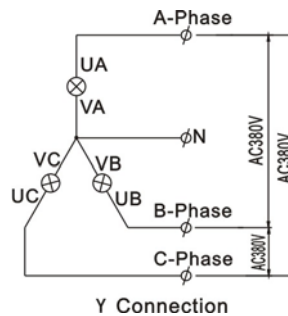
Application



Model Selection

Model	H	H1	L1	L2	W	Dia. Of Lamp panel	Waterproof Connector	Feature	Weight
ABC-2	540	480	120	95	200	Φ100	M20	Normal	5.9kg
ABC-2B	540	480	120	95	200	Φ100	M20	Stainless steel enclosure ABC-2	5.9kg
ABC-2W	540	480	120	95	200	Φ100	M25	ABC-2outdoor type	5.9kg
ABC-2S	540	480	120	95	200	Φ100	M20	ABC-2flash type	5.9kg
ABC-2F	300	260	70	70	115	Φ52	M20	normal	2.6kg
ABC-2F1	300	260	70	70	115	Φ52	M20	AC460V ABC-2F	2.6kg
ABC-2A	300	260	70	70	115	Φ52	M20	Stainless steel inclosureABC-2F	2.6kg
ABC-3	640	480	120	95	240	Φ140	M20	Normal	7.2kg
ABC-3T	640	480	120	95	240	Φ140	M20	Superlight ABC-3	7.2kg
ABC-3A	640	480	120	95	240	Φ140	M20	Arrow	7.2kg
ABC-3H						Φ140	M20	Level mount ABC-3A	7.2kg
ABC-3-2						Φ140	M27	Combined with two lights ABC-3	7.3kg
ABC-3-4						Φ140	M27	Combined with four lights ABC-3	9.9kg
ABC-2-8						Φ100	M25	AC3000V ABC-2 indoor type	9.5kg
ABC-H2						Φ100	M20	With alarm function ABC-2	5.7kg
ABC-2-2						Φ100	M20		2.5kg

Connect diagram



Y Connection